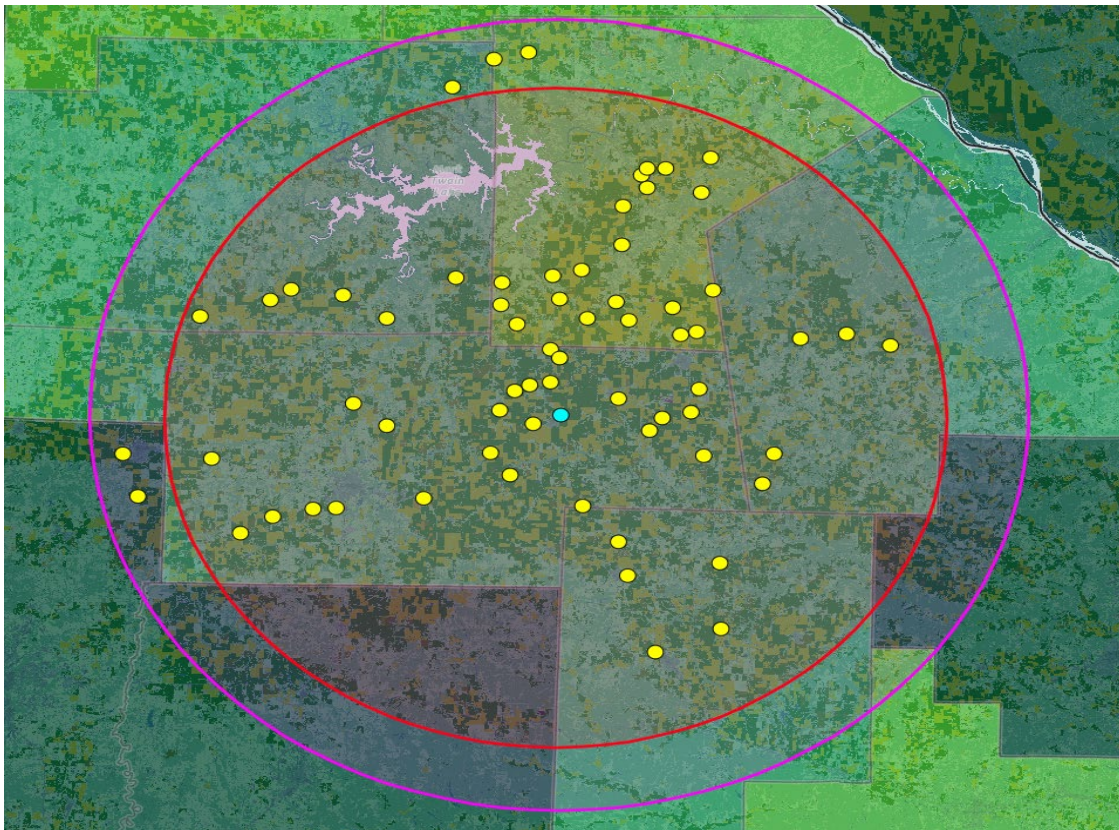


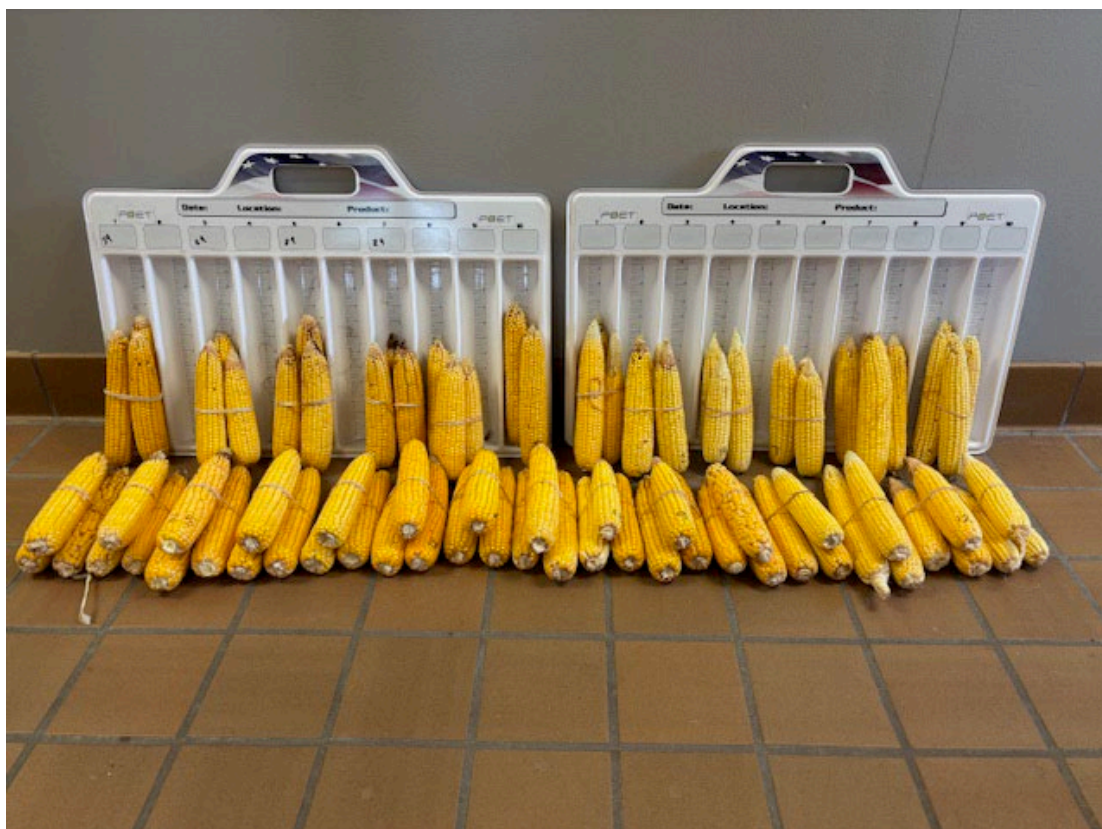
Poet Laddonia 2025 Crop Tour

Sixty-seven fields were checked in 6 counties. Each field was entered approximately 130 feet and only viable ears were counted to figure out population. We measured 17.5 feet to show the population, then the 5th, 13th and 20th ears were pulled, and we counted the length and round. The samples were then taken back to the office to decide the overall condition, which was a group effort.

Many different growing conditions were seen, but the one constant was moisture. All corn still had adequate moisture. The early corn showed some disease with grey leaf spot, a little southern rust, brown spot, and stalk rot often mistaken as tar spot being the most common. It is believed that the early corn is far enough along that the yield will not be affected, but later corn could be an issue. Although it may not affect the yield, standability seems to be an issue. Only one field had the shucks turning brown and ears were not yet turned down. Fields to the SE were late, some just tasseling.

We saw a little tip back, but overall, the samples looked good. We did see lots of “ears growing out of the husks, which makes them vulnerable to fungal infection and the development of ear mold. This is thought to be caused by stress and heat during pollination, followed by cooler temperatures and moisture.







County	# Samples Per County	County Yield Average	Crop Year	USDA Planted Acres	Harvested Acres	Average Yield	Total Bushels in Draw Area
Audrain	25	182	2014	500,500	487,500	182	90,622,340
Boone	2	188	2015	483,200	464,200	130	62,265,910
Monroe	8	176	2016	560,800	523,500	190	96,313,000
Montgomery	6	154	2017	513,300	497,000	169	75,011,000
Pike	7	161	2018	508,855	490,527	134	61,921,440
Ralls	19	179	2019	456,300	405,990	159	67,072,000
			2020	501,700	480,700	165	80,707,890
			2021	538,000	514,100	145	74,968,060
			2022	467,755	457,098	166	75,701,716
			2023	544,600	528,100	120	60,974,870
			2024	486,700	468,800	187	87,571,840
			2025	520,868	468,782	176	82,505,632
							Estimated Bushels

The 2025 Poet Laddonia Draw yield estimate is.

176 bu/acre